

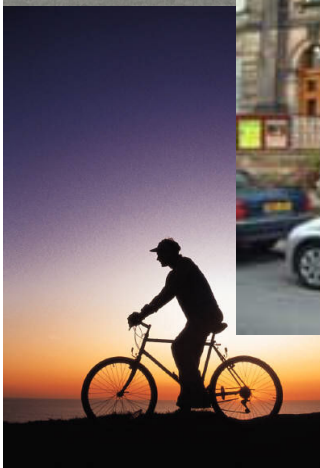


CITY OF
YORK
COUNCIL



**2006 – 07
ANNUAL
PARKING
REPORT**

**NETWORK MANAGEMENT SECTION
CITY DEVELOPMENT AND
TRANSPORT**



FOREWARD

1. The City of York Council was formed as a result of Local Government reorganisation and came into being in April 1996. At that time it inherited the parking stock and practices of the former York City Council and those parts of Ryedale District, Selby District and Harrogate District Councils that were previously administered by those authorities within the boundary of the new council. All off street parking inherited was however located within the former York City council area. Also within this area was an extensive Residents Priority Parking scheme. Both were enforced by York City Council staff. Yellow line restrictions were enforced by the police.
2. The new council took advantage of the opportunity opened up by the 1991 Road Traffic Regulation Act and sought powers to take over all on street enforcement for the police. These powers – the Decriminalisation of Enforcement Powers (DPE) – came into effect on the 8 October 2000. Since that time all waiting restrictions within the administrative boundary of the city except for those on the A64 Trunk Road, have been enforced by City Council staff. These individuals also enforce on street permitted parking regulations including Residents Priority Parking areas and off street parking sites.
3. This is the first Annual Parking Report produced since the adoption of DPE and provides readers an overview of the activities of the service together with key service outcomes.

CONTENTS

	Subject	Page No.
1	Introduction	5
	Notable achievements	6
	General	6
	Pay by Phone	6
	Foss Bank	7
	Protocols	7
	Parking Enforcement Service levels	7
2	Key Facts and Figures 2006/2007	9
	Off Street Parking Capacities	9
	On Street Restrictions	9
	Management and Enforcement	10
3	Financial Performance 2006/2007	11
	Parking Services Income and Expenditure	11
	Distribution of 'balance to council funds'	12
	Residents Parking (Respark)	13
4	Statistical Performance 2006/2007	15
	On Street Penalty Charge notices (PCN's)	15
	On Street PCN's	15
	Enforcement of PCN's issued	
	Cancellations	15
	Written off and Paid at Discount rates	16
	PCN summary	16
	Objections and Representations recieved	16
	Staff	17
5	Performance Indicators	18

LIST OF TABLES

No.	Contents	Page No
1	Off Street parking capacities	9
2	Total lengths of controlled on street restrictions	9
3	Number of Permits issued	10
4	Parking Budgets	11
5	Allocation of parking derived income	13
6	Respark account 2001/02 to 2006/07	14
7	Sickness Statistics by Parking Services team	15
8	Performance Indicators	19

CHARTS

No.	Contents	Page No
1	Parking Income	12
2	Parking Expenditure	12
3	Notional Distribution of balance to council funds	13
4	Distribution Respark budget	14

APPENDICIES

No.	Contents	Page No
A	PCN issue by car park	20
B	PCN issue for Off street parking contraventions	21
C	PCN issues in streets where permanent restrictions are in force for last three years	22
D	PCN issue for On street parking contraventions	35
E	PCN cancellation reasons	36
F	PCN's issued, cancelled, written off and paid	39

1 INTRODUCTION

1. Decriminalised Parking Enforcement (DPE) was introduced across the whole of the City of York Council area on 8 October 2000. For reasons of safety and with the full agreement of the North Yorkshire Police, the Statutory Instrument granting these powers to the city council excluded the enforcement of the clearway regulations imposed on the A64 trunk road. These powers transferred responsibility for parking enforcement, from the Police to the City Council and thus for the first time placed both the Order making and Order enforcing abilities within the same hands. The change was not accompanied by any alterations in any on or off street restrictions although every regulation was physically checked against the relevant Order for compliance.
2. Prior to the introduction of DPE all signing associated with any regulation that would be enforced by the city council was physically checked and where required any discrepancies rectified. All Residents Priority Parking (Respark) scheme signs were replaced so as to simplify enforcement under the 1991 Act powers.
3. The introduction of DPE also saw the rationalisation of the previous 368 'live' Traffic Regulation Orders into two comprehensive Orders, one covering moving traffic regulations and the other parking regulations. This simple system has been subsequently maintained with 'in year' changes being consolidated annually so as to retain a single document for each type of restriction.
4. Enforcement is carried out by city council staff and all administration associated with the service is also undertaken 'in-house'.
5. Enforcement is undertaken 7 days a week between 07.45 hours and 21.30 hours although occasional exercises may be mounted outside these times in respect of specific issues. Patrols are undertaken on foot and by motorcycle. The service has transport which is used to move Parking Attendants around from one patrol area to another. A 'Hot-Line' system is in operation which allows any individual to report a possible contravention to a dedicated free telephone number. The service is organised that any call received during normal duty hours is attended within a target time of 30 minutes from receipt of call.
6. This report gives statistics and analysis in respect of the period 1 April 2006 to 31 March 2007.

NOTABLE ACHIEVEMENTS

General

7. Conversion of the original enforcement service which had responsibility for enforcing solely off street parking and Respark areas into one that carried out the full range of enforcement duties was a significant undertaking. This was however delivered in record time with the entire DPE project taking a little over 8 months to achieve from start to finish, including the obtaining of the necessary statutory powers. The five North Yorkshire Police Traffic Wardens allocated to duty in York were absorbed under TUPE regulations although of these 3 elected immediately prior to transfer to move out of the enforcement service entirely. Even with the addition of the then two Traffic Wardens the establishment had to be substantially increased with some eight extra staff being recruited and trained.
8. Subsequently the enforcement service has been reorganised into four teams each led by a Team Leader so as to provide a more responsive and flexible system. All patrol staff are equipped with their own dedicated radios, handheld data-loggers and printers.
9. In a similar fashion the 'in-house' administration team was expanded from that in place pre DPE and which simply dealt with off street parking and respark areas. There is a dedicated representations team led by a Representations Officer who deal exclusively with formal challenges to the issue of a Penalty Charge Notice (PCN).

Pay by Phone

10. The ability to pay by mobile phone was introduced in November 2005. This service covers off street Pay and Display parking areas and is operated by a contractor- Verrus – on behalf of the council. Pre registration prior to use is not necessary and customers can pay or top up their parking fee from any convenient location. Customers can elect to be reminded by text message when their paid for parking is about to expire.
11. The scheme has proved to be trouble free and extremely popular with close to 4% of all parking payments now being received from Pay by Phone customers. This proportion is continuing to increase as more and more customers recognize the great convenience that it offers.
12. Patrol staff undertake enforcement using Blackberry units – a mobile form of internet connection similar to a large mobile phone. Paid for vehicle registration numbers are accessible to the Attendant who can then issue a PCN to any vehicle not on the database or displaying a ticket in the windscreen. The Blackberry units also double as a

mobile phone and provide additional personal security (along with their radio) for Attendants whilst working alone.

Foss Bank

13. This multi story car park was significantly underused and as a consequence was suffering from antisocial behaviour further reducing customer use. Two initiatives introduced on the 1 April 2006 have substantially increased use and with it eliminated the previous anti social behaviour issues. Ten parking spaces have been allocated on a contract parking basis to North Yorkshire Police for use by their police training unit based at the nearby University of St John. This arrangement means that there are trained and in training police officers constantly coming and going throughout the day.
14. The parking charges were also reduced to a flat rate of 70p per hour for any period of use within the opening hours. After a slow start trade has increased to such an extent that the site is now very popular and has on occasions to display 'Full' signs. There is no evidence that the use has reduced the use of any other city council operated car park.

Protocols

15. Parking services employs a significant number of people all of whom are required to undergo extensive training both on and off the job. Whilst this programme has been instrumental in ensuring a professional approach to the delivery of the service there were still variations in approach between different officers leading to variation in actions taken in similar circumstances by different individuals. This difficulty has been addressed by the introduction of two Protocols. One deals with the process of enforcement and the other the handling of appeals (ie informal objections to the issue of a PCN). Both documents were developed actively with the full cooperation of staff and were operated on a trial basis prior to being adopted fully on the 1 April 2007.
16. Member approval to the publication of these Protocols on the council's web site is being sought so that customers can directly access the information. It is hoped that such a move will increase the transparency of the service and help to dispel some of the anti parking attitudes present within the media and in some members of the public.

Enforcement Service Level Agreement

17. Parking Services have operated for a number of years under a series of actual and implied 'Customer Contracts'. These have sought to establish various levels of service that the customer can expect. It

became apparent during the course of 2006/7 that through the passage of time, budget alterations and the change in policy brought about by the change in political administration in May 2003 not to publish further or renew contracts, that it is not always clear what the service is intended to deliver. To remove any ambiguity a Service Level Agreement has been compiled. Member approval to the publication of this document on the council's web site is being sought so that customers can directly access the information.

2 KEY FACTS AND FIGURES

Off street parking capacities

18. Table 1 below gives the current and historic number of spaces by car park operated by the council relative to when DPE was inaugurated.

Table 1

car park	Number of spaces	
	2000	2006
Foss Bank	338	316
Esplanade	163	75
Marygate	376	352
St Georges	443	443
Union Terrace	246	216
Nunnery Lane	200	193
Bootham	100	100
Shambles	275	269
Haymarket	110	102
Monkbar	247	243
Kent Street	374	374
Castle	320	318
Piccadilly	290	287
Peel Street	77	77
Castle Mills	73	73
Heworth Green	400	0
Toft Green	57	0
Tanner Row	255	0
TOTALS	4344	3438

On Street restrictions

19. Table 2 gives the total length of controlled on street restrictions in 2006/07

Table 2

Respark	(m)
Length of 10 minute bays	19,939
Length of 30 minute bays	176
Length of 60 minute bays	5,464
Length of 120 minute bays	898
Length of prohibited waiting	73,241
Totals	99,719

Other		
	Length of prohibited waiting	167,083
	Length of Pay & Display bays	823
	Totals	167,906
	Grand totals	267,626

20. Table 3 gives the number of permits issued in 2006/07

Table 3

Respark		
	Household and other	5,526
	Visitor	194,000
Other		
	Car parks	129

Management and Enforcement

21. During the period covered by this report, 24 Parking Attendants were deployed with a normal presence of between 4 and 7 officers on duty at any one time. In addition 3 car park attendants were employed to provide a permanent presence in Shambles car park (due to its Pay of Exit system) and 4 cash collectors were in post. A total of 23,418 Penalty Charge Notices (PCNs) were issued, 15,004 on-street and 8,414 in car parks.

3 FINANCIAL PERFORMANCE 2006/07

Parking Services budget

22. Table 4 below gives a breakdown of the Parking Budgets and year end outturn.

Table 4

INCOME (Gross)	Budget	Outturn
	£	
Residents Parking	-558,950	-580,494
Short Stay Car Parks	-2,042,270	-2,122,113
Standard Stay Car Parks	-3,781,950	-3,853,895
Coach Parks	-44,000	-40,592
Penalty Charges	-762,860	-658,950
On Street	-474,800	-512,704
Season Tickets & Passes	-140,430	-121,309
Other Services	-13,680	-15,722
Total	-7,818,940	-7,905,780
EXPENDITURE (Gross)		
Enforcement	839,620	816,150
Administration	671,000	654,731
Security	287,760	273,868
Car Park Expenditure	2,270,510	2,223,932
Respark New Schemes	13,000	12,310
	4,081,890	3,980,991
Respark K081	19,190	13,811
Total	4,101,080	3,994,802
Balance to council fund	-3,717,860	-3,910,977

23. The out turn position is shown diagrammatically in the two charts below:

Chart 1 – Income

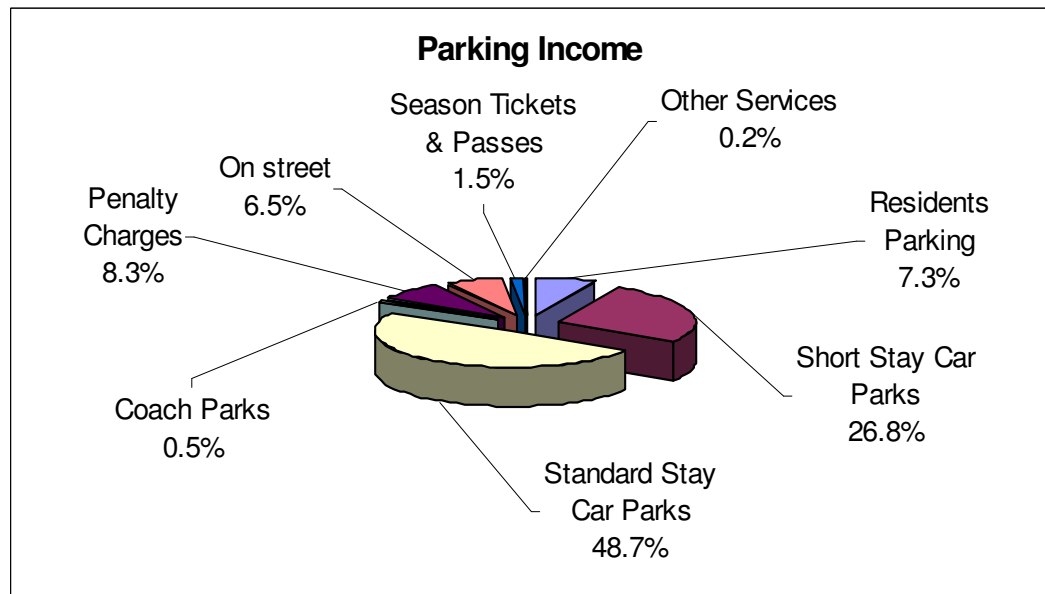
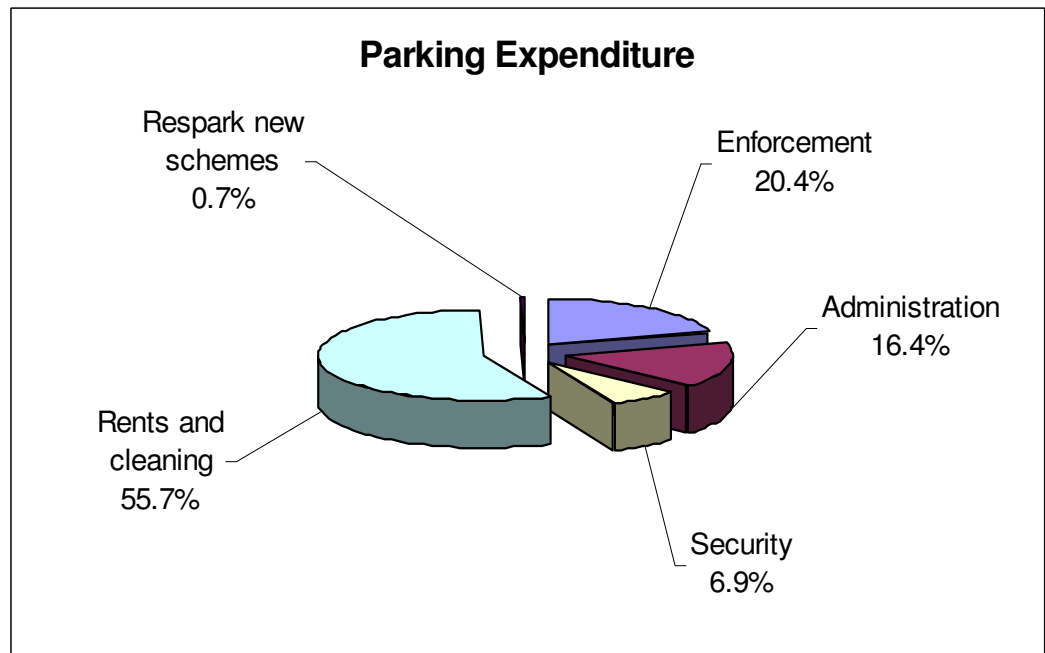


Chart 2 – Expenditure



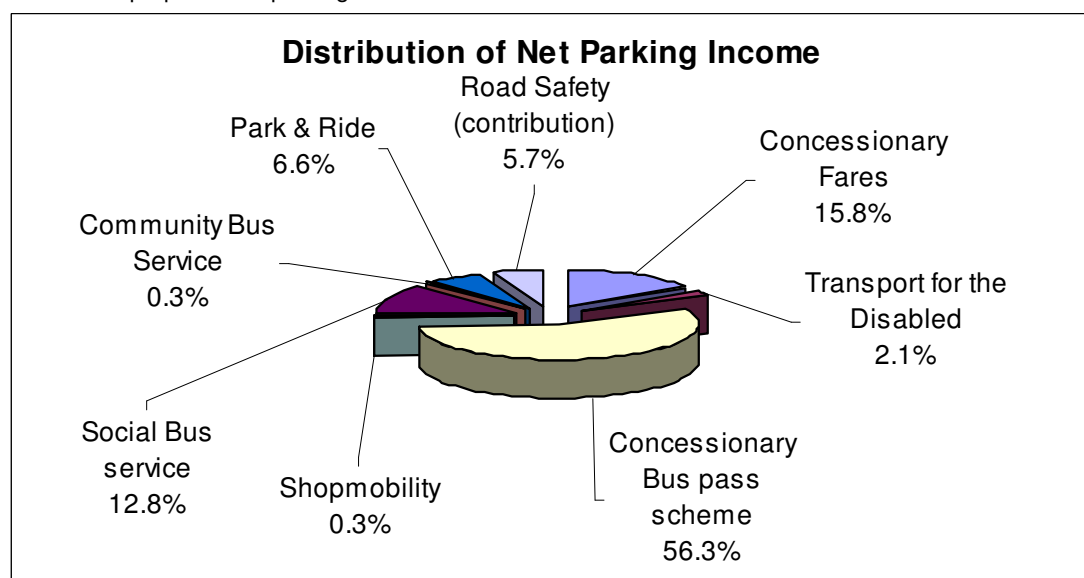
Distribution of balance to council fund

24. The balance to the council fund (of £3,910,977) was £193,117 (or 5.19%) higher than budgeted. This balance as is required by law, was used to deliver Transport related services. Whilst there is no direct financial connection as such (as in reality the balance effectively means that income does not have to be raised from elsewhere – such as the council tax) the vast majority of this was spent on supporting public transport within the city. To replace the nett income received as a result of the parking trading account the council tax for the city would need to increase by some 8%. Table 5 and Chart 3 below show how this surplus was used in 2006/07.

Table 5 – Allocation of parking derived income

Concessionary Fares	£618,210
Transport for the Disabled	£83,888
Concessionary Bus pass scheme	£2,201,955
Shopmobility	£13,200
Social Bus service	£499,484
Community Bus Service	£11,576
Park & Ride	£257,960
Road Safety (contribution)	£224,704
TOTAL	£3,910,977

Chart 3 – proportion of parking derived income allocated to different services



Residents Parking (Respark)

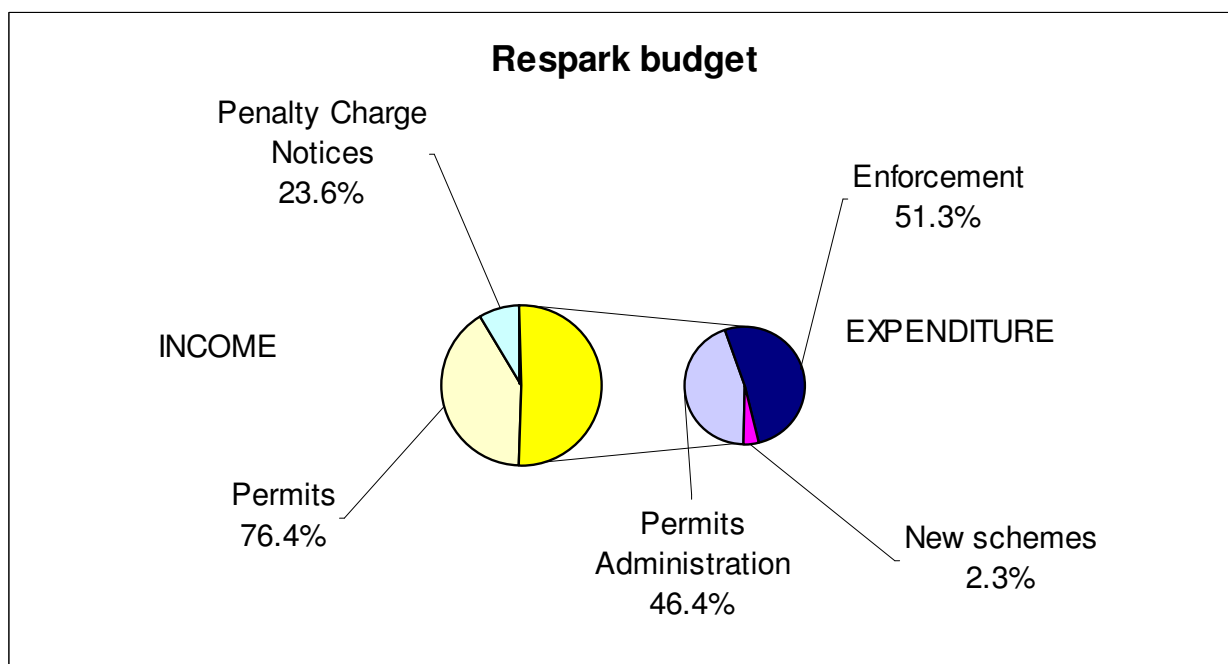
25. The Council has a long standing Policy in connection with its Residents parking operation. This policy requires the service to be operated in such a way that it does not result in a cost falling upon the general charge-payers of the city. All expenditure in connection with the service must therefore be balanced by income derived from the sale of permits and Penalty Charge Notices issued. Table 6 below gives the Income and Expenditure on the Respark account since October 2000 – the date upon which the council incurred additional expenditure as a result of taking over the enforcement of yellow lines within Respark areas from the police, but also was able to keep any Penalty Charges that were paid.

Table 6

Respark	2001/02	2002/03	2003/04	2004/05	2005/06	2006/07
	£k	£k	£k	£k	£k	£k
Income						
Permits	245	270	283	430	456	580
PCN's	115	134	135	132	141	119
Expenditure						
Permits Admin	186	208	221	258	278	313
Other	233	250	283	285	307	359
New schemes				14	14	26
Balance	-59	-54	-86	5	-2	1

26. Chart 4 below shows diagrammatically how the income and expenditure was distributed in 2006/07

Chart 4 distribution of expenditure and income 2006/07



4 STATISTICAL PERFORMANCE 2006/07

Off Street Penalty Charge Notices (PCN's)

27. A total of 8,414 PCN's were issued within city council car parks in 2006/07. This is down on 2005/6 when a total of 10,702 were issued and down on 2004/05 with a total of 12,497. In all three years the highest volume of PCN's were issued for offences committed in Castle car park.
28. Just over 49% of all PCN's issued were for parking after expiry of the paid for time with 35% being for parking without a valid ticket. It is of concern that just under 3.5% of the PCN's issued concerned persons parking in marked disabled persons bays without displaying a valid Disabled Persons badge.
29. Appendix A give the full car park by car park breakdown with Appendix B providing information about the reasons for the issue of a PCN.

On Street PCN's

30. A total of 15,004 PCN's were issued during 2006/07 in respect of on-street offences. This again is lower than in 2005/06 (17,765) and lower than in 2004/05 (16,261). The highest number of penalty charge notices were issued in North Street and Piccadilly.
31. Close to 45% of the offences in 2006/07 were concerning the contravention of waiting or loading restrictions with 31% being for contraventions of Resident parking regulations.
32. Appendix C gives a street by street breakdown of the PCN's issued in each of the three years with Appendix D providing information about the reasons for the issue of a PCN. T

Enforcement of PCN's issued

Cancellations

33. 22.1% (5,191) of all issued PCN's were cancelled in 2006/07. Of these the majority reason was due to the councils long standing policy of giving offenders a 'second chance' with respect to some offences. Customers who failed to display a permit that they had been issued with, failed to display a Disabled Persons Badge that they were issued with and entitled to use, or had purchased a Pay and Display Ticket but had failed to display it, were, if such failure was the first offence, warned about their future actions and the PCN cancelled. This category of cancellation amounted to 2700 PCN's or 52% of those cancelled.

34. 160 PCN's (3% of those cancelled) related to foreign vehicles but a substantial 832 (16%) concerned vehicles where the DVLA were unable to establish the owner.
35. Only three PCN's have resulted in an appeal to the National Parking Adjudication Service(NPAS) and decisions are awaited from the adjudicators for all of these cases.
36. Appendix E gives the break down of cancellation reasons in detail.

Written off and paid at the Discount rate

37. A total of 66 of those PCN's issued in 2006/07 have been written off as being un-recoverable after taking the full legal action available to the council to pursue a debtor. This situation usually occurs when the individual concerned has insufficient assets to meet the costs of their debt and arrangements cannot be made for instalment payments or the debtor cannot be traced by bailiffs acting on the council's behalf.
38. 13,283 PCN's were paid at the £30 discount rate.
39. Appendix F gives a full breakdown by month of PCN's issued, cancelled, written off and paid at the discount rate.

PCN summary

40. The breakdown of PCN's issued in 2006/07 is given in Table 6 below:

Table 6

No of PCN's issued	23,418	
No of PCN's cancelled	5191	
First offences		2,700
Other		2,491
No written off	66	
No. of PCN's Paid	16,031	
No paid at discount rate		13,283
No paid at other rates		2,748
No. still being pursued	2,130	

Objections and representations received

41. An objection is an informal challenge to the council about the issue of a PCN. A representation is a formal challenge in accordance with the 1991 Road Traffic Act to the issue of a PCN. Only when a representation is rejected may a motorist appeal to the National Parking Adjudication Service (NPAS) for an independent decision. The grounds upon which a representation may be made are limited by law but any representations or objections that are received will be

considered fully, reasonably and in accordance with the council's appeal protocols.

- 42. In the year 2006/07 the council dealt with a total of 6,954 objections and 2,349 representations. This meant that over 32% of all PCN's issued resulted in some form of a challenge against issue. A representation usually results from the rejection of an initial objection but this is not always the case and about a quarter of representations are made without any previous correspondence having been received.
- 43. On average each objection generated just under 2.5 items of correspondence between the customer and the council.
- 44. Of the 2,349 representations only 3 reached the point of a case before NPAS. Decisions are awaited in all three cases.

Staff

- 45. During the period Parking Services suffered from a number of long term absences and a high level of short term sickness. These combined had the effect of reducing the effective strength of the teams at times to seriously low levels. In the period around Christmas 2006 the effective strength of the enforcement team was reduced from 24 to just 10 through illness. Sickness in that team combined with holidays also reduced the number of Attendants on shift on occasions to just three.
- 46. Table 7 below gives the sickness statistics for each team within Parking Services.

Table 7

Team	Establishment	Number of days lost through sickness 2006/07	Average loss per person
Management	3	77	25.67
Enforcement	24	571.34	23.81
Car Park Attendants	3	14	4.67
Cash Collection	4	132.11	33.03
Administration	12	43.21	3.6
Representations	3	7	2.33
Maintenance	1	0	0
Total	50	844.66	16.89#

this is NOT the sum of the individual teams but the total number of days lost taken over the whole of the Parking Services establishment

47. In the reporting period there were 26 instances of staff being away from duty (in one sickness incident) for more than seven days. This involved 16 individuals (1 in Management, 11 in Enforcement, three in Cash collection and one in Car Park Attendants). Seven of the long term absences involved staff undergoing operations. Two of the absences involved stress.
48. There were 11 incidents reported during the year of serious verbal abuse or physical assaults, all involving members of the Enforcement team.

5 PERFORMANCE INDICATORS 2006/07

49. The service performance against Performance Indicators and targets was as given in Table 8.

Table 8

Performance Indicator	Target	Actual
Letters responded to within 10 days	95%	87%
% of PCNs that resulted in an appeal to NPAS	0%	0.029%
% of budget income received	100%	101.1%
% of budget expenditure spent	100%	97.53
% of hotline calls responded to with 30 minutes	100%	89.6%
Patrol Targets		
Residents Parking areas	3 per week per street	3.6 per week per street
Prohibited waiting (Inner York- within 1 mile of Centre)	3 per week per street	3.1 per week per street
Prohibited waiting (Outer York – remainder of City)	2 per week per street	1.8 per week per street
Loading bans	6 per week per street	6.2 per week per street
On Street Specific Marked Bays e.g. Disabled, Taxi, Police, & Bus Stop Clearways	4 per week per bay	4.3 per week per bay
School No Stopping Areas	2 Schools per week during term time.	2.4 Schools per week during term time.
Limited waiting On Street	2 per week per street	1.9 per week per street
Clearways	1 per week per street	1 per week per street
On Street Pay and Display	5 per week per street	5.4 per week per street
Off Street Pay and Display	7 per week per car park (at least one visit per day)	7.2 per week per car park (at least one visit per day)

PCN Issued by Car Park

	2004/05	2005/06	2006/07	TOTALS
CASTLE CAR PARK	3528	3364	2892	9784
UNION TERRACE CAR PARK	1462	1044	824	3330
BOOTHAM ROW CAR PARK	1322	936	643	2901
NUNNERY LANE CAR PARK	971	904	636	2511
MONK BAR CAR PARK	1200	695	563	2458
PICCADILLY CAR PARK	793	797	677	2267
MARYGATE CAR PARK	1043	622	448	2113
ST GEORGES FIELD CAR PARK	492	544	275	1311
ST LEONARDS PLACE CAR PARK	449	516	290	1255
ESPLANADE CAR PARK	308	351	221	880
BISHOPTHORPE ROAD CAR PARK	221	241	115	577
PEEL STREET CAR PARK	165	164	145	474
FOSS BANK CAR PARK	154	117	184	455
HAYMARKET CAR PARK	90	95	136	321
UNION TERRACE COACH PARK	96	88	89	273
KENT STREET CAR PARK	76	58	60	194
CASTLE MILLS CAR PARK	22	72	50	144
ROWNTREE PARK CAR PARK	0	20	29	49
BARBICAN CAR PARK	73	1	0	74
GRIMSTON PARK & RIDE	0	22	39	61
KENT STREET COACH PARK	21	19	21	61
RAWCLIFFE PARK & RIDE	0	7	43	50
ASKHAM BAR PARK & RIDE	0	13	19	32
EAST PARADE CAR PARK	11	10	6	27
MONKS CROSS PARK & RIDE	0	2	9	11
TOTALS	12497	10702	8414	31613

PCN's Issued for Off-Street Parking Contraventions 2006-07

	Total
73 Parked without payment of the parking charge	466
80 Parked for longer than the maximum period permitted	0
81 Parked in a restricted area in a car park	11
82 Parked after the expiry of paid for time	4150
83 Parked in a car park without clearly displaying a valid pay and display ticket	2537
84 Parked with additional payment made to extend the stay beyond time first purchased	1
85 Parked in a permit bay without clearly displaying a valid permit	178
86 Parked beyond the bay markings	468
87 Parked in a disabled person's space without clearly displaying a valid disabled badge	291
89 Vehicle parked exceeds maximum weight and/or height and/or length permitted in the area	0
90 Returned within one hour of leaving a bay or space in a car park	0
91 Parked in a car park or area not designated for that class of vehicle	197
92 Parked causing an obstruction	4
93 Parked in car park when closed	82
95 Parked in a parking place for a purpose other than the purpose for the parking place	29
TOTALS	8414

PCN's Issued in Streets where permanent restrictions were in place

	2004/05	2005/06	2006/07
ABBEY STREET	4	1	0
ABBOT STREET	18	19	26
ABBOTSFORD ROAD	3	0	2
ACOMB PRIMARY SCHOOL SERVICE ROAD	1	0	0
ACOMB RD/POPPLETON RD LINK	0	1	0
ACOMB ROAD	17	15	13
ACOMB ROAD - LINK ROAD	0	1	0
ACOMB ROAD-SERVICE ROAD	0	3	1
AGAR STREET	20	27	18
ALBEMARLE ROAD	5	19	8
ALBERT STREET/AVON HOUSE SERVICE ROAD	0	1	1
ALBERT STREET	26	44	35
ALBION STREET	9	8	7
ALCELINA COURT	2	0	1
ALDRETH GROVE	2	1	0
ALDWARK	17	23	17
ALMA TERRACE	0	7	7
ALMERY TERRACE	1	6	2
ALNE TERRACE	1	13	1
AMBER STREET	33	24	27
AMBROSE STREET	1	3	0
AMY JOHNSON WAY	1	2	0
ANCRESS WALK	8	10	9
ANCROFT CLOSE	10	4	8
ANNE STREET	16	14	7
APOLLO COURT	0	2	3
APOLLO STREET	2	1	1
APPLETON ROAD - BISHOPTHORPE	1	0	0
AVENUE ROAD	23	4	18
AVENUE TERRACE	29	35	24
BACK LANE	0	1	0
BACK SWINEGATE	48	51	114
BACKHOUSE STREET	15	11	5
BAILE HILL TERRACE	9	5	7
BALMORAL TERRACE	0	2	0
BAR LANE	60	48	29
BARBICAN ROAD	3	0	1
BARTLE GARTH	10	4	6
BEACONSFIELD STREET	27	34	18
BECKFIELD LANE	0	1	0
BEDERN	11	9	10
BEECH AVENUE	2	4	1
BEECH GROVE	3	28	11
BELGRAVE STREET	1	36	11
BELLE VUE STREET	11	5	2
BELLE VUE TERRACE	8	5	1

	2004/05	2005/06	2006/07
BERKELEY TERRACE	4	18	10
BEWLAY STREET	5	17	14
BISHOPGATE STREET	0	1	0
BISHOPGATE STREET SLIP ROAD	1	0	0
BISHOPHILL JUNIOR	16	13	6
BISHOPHILL SENIOR	103	74	62
BISHOPTHORPE ROAD	14	33	8
BLAKE STREET	190	277	217
BLOSSOM STREET	39	47	23
BLUE BRIDGE LANE	1	11	6
BOOTHAM CRESCENT	90	50	48
BOOTHAM	17	17	13
BOOTHAM ROW	11	13	2
BOOTHAM SQUARE	10	5	1
BOOTHAM TERRACE	59	33	41
BOROUGHBRIDGE ROAD	3	25	6
BOWLING GREEN LANE	10	1	13
BRIDGE LANE	0	0	1
BRIDGE STREET	2	7	2
BRIGGS STREET	13	54	33
BRINKWORTH TERRACE	0	21	11
BROADWAY	0	2	2
BROADWAY WEST	2	1	0
BROOK STREET	29	5	6
BROWNLOW STREET	60	31	54
BUCKINGHAM STREET	84	75	74
BULL LANE (OFF LAWRENCE ST)	3	4	0
BULL LANE(OFF EAST PARADE)	0	3	0
BURTON GREEN	1	0	2
BURTON STONE LANE	19	3	5
BUTCHER TERRACE	2	4	0
CAMBRIDGE STREET	43	40	14
CAMBRIDGE STREET SERVICE ROAD	2	0	0
CAREY STREET	2	8	4
CARL STREET	0	1	0
CARLETON STREET	2	50	13
CARLETON STREET/CARLISLE STREET LINK	0	0	1
CARLISLE STREET	0	6	0
CARMELITE STREET	57	71	90
CARR LANE	28	29	19
CASTLEGATE	158	182	151
CECILIA PLACE	7	10	8
CEMETERY ROAD	25	42	15
CENTURION WAY	1	2	0
CHALONERS RD	0	0	2
CHAPEL ROW	13	5	6
CHARLTON STREET	20	17	14
CHATSWORTH TERRACE	0	3	5
CHAUCER STREET	0	8	3

	2004/05	2005/06	2006/07
CHERRY LANE	0	1	0
CHERRY STREET	18	13	1
CHURCH LANE	4	4	17
CHURCH STREET	20	16	38
CINDER LANE	1	0	0
CLAREMONT TERRACE	71	51	47
CLARENCE STREET	4	7	3
CLARENDONS COURT	0	1	0
CLEMENT STREET	10	6	5
CLEMENTHORPE	5	11	20
CLIFFORD STREET	20	25	13
CLIFTON	48	73	57
CLIFTON GREEN	5	15	1
CLOISTERS WALK	3	7	14
COLE STREET	10	4	3
COLENZO STREET	4	4	8
COLLEGE STREET	56	62	51
COLLIERGATE	19	34	58
COMPTON STREET	1	0	8
CONEY STREET	85	126	81
COPPERGATE	4	3	6
CORNLANDS ROAD	0	0	8
CROMWELL ROAD	114	53	70
GROSS STREET	0	7	9
CROSSWAYS	1	0	0
CUMBERLAND ST	102	120	96
CUSTANCE WALK	5	2	13
CYGNET STREET	9	8	8
DALE STREET	35	36	25
DALES LANE	8	1	5
DALGUISE GROVE	2	3	3
DALTON TERRACE	9	8	5
DANESFORT AVENUE	0	5	0
DARNBOROUGH STREET	10	16	5
DAVYGATE	385	827	280
DAYSFOOT COURT	1	6	2
DE GREY STREET	32	19	15
DE GREY TERRACE	24	24	9
DEANGATE	96	137	109
DEL PYKE	25	23	21
DELWOOD - FULFORD	0	1	0
DENNIS STREET	75	60	50
DENNISON STREET	27	6	15
DEWSBURY TERRACE	26	20	26
DIAMOND STREET	15	32	19
DIXONS YARD	30	37	50
DODGSON TERRACE	1	3	1
DODSWORTH AVENUE	2	4	0
DOVE STREET	3	5	14

	2004/05	2005/06	2006/07
DRAKE STREET	5	5	4
DRIFFIELD TERRACE	32	42	40
DUDLEY STREET	11	7	14
DUNCOMBE PLACE	314	368	281
DUNDAS STREET	62	45	77
EARLE STREET	9	9	5
EASON VIEW	0	0	1
EAST MOUNT ROAD	67	38	47
EAST PARADE	33	40	18
EBOR STREET	30	30	19
ELDON STREET	93	69	105
ELDON TERRACE	31	27	22
ELIOT COURT - FULFORD	1	1	0
ELVINGTON TERRACE	0	17	3
EMERALD STREET	13	13	16
EMMERSON STREET	5	11	5
ENFIELD CRESCENT	6	8	7
ESCRICK STREET	9	1	4
EXHIBITION SQUARE	9	7	6
FABER STREET	15	14	28
FAIRFAX STREET	37	42	40
FALCONER STREET	24	19	4
FALKLAND STREET	3	1	6
FAWCETT STREET	40	36	12
FEASEGATE	18	11	13
FENWICK STREET	4	2	8
FERN STREET	4	2	2
FETTER LANE	184	186	135
FEVERSHAM CRESCENT	29	27	24
FEWSTER WAY	9	9	2
FIELD LANE	3	15	0
FIFTH AVENUE	2	3	2
FILEY TERRACE	5	1	5
FINKLE STREET	0	2	1
FISHERGATE	59	120	53
FITZROY TERRACE	0	1	0
FOSS BANK	0	1	0
FOSS ISLANDS ROAD	25	17	27
FOSSGATE	96	227	292
FOSSWAY	2	6	1
FOUNTAYNE STREET	92	93	64
FOURTH AVENUE	0	1	0
FOXWOOD LANE	1	0	0
FRANCES STREET	0	6	1
FREDERIC STREET	16	10	11
FRONT STREET	56	97	115
FULFORD CROSS	1	0	1
FULFORD ROAD	24	26	7
GALE LANE	0	10	0

	2004/05	2005/06	2006/07
GARDEN PLACE	25	36	39
GARDEN STREET	65	40	63
GARDEN STREET SERVICE ROAD	0	2	1
GARFIELD TERRACE	1	5	1
GARTH TERRACE	8	0	1
GEORGE CAYLEY DRIVE	2	3	0
GEORGE COURT	2	6	2
GEORGE HUDSON STREET	2	2	0
GEORGE STREET	84	109	76
GILLAMOOR AVENUE	0	0	1
GILLYGATE	24	22	11
GLADSTONE STREET - ACOMB	2	18	6
GLADSTONE STREET - HUNTINGTON ROAD	10	3	6
GLEN AVENUE	16	14	10
GLEN ROAD	21	16	21
GOODRAMGATE	157	254	256
GORDON STREET	8	7	1
GRANARY COURT	25	18	15
GRANGE GARTH	2	3	3
GRANGE STREET	9	4	8
GRANTHAM DRIVE	1	0	0
GRANVILLE TERRACE	0	3	3
GRAPE LANE	3	2	3
GRAY STREET	5	12	9
GREEN DYKES LANE	27	30	29
GREEN LANE - ACOMB	0	5	5
GREEN LANE - CLIFTON	0	2	0
GREEN LANE TRAD EST SERVICE RD - CLIFTON	2	0	0
GREENCLIFFE DRIVE	2	2	6
GREENFIELDS	0	0	2
GROSVENOR ROAD	19	34	33
GROSVENOR TERRACE	70	80	41
GROVE VIEW	0	0	3
GROVES LANE	1	1	2
HALEY'S TERRACE	5	26	10
HALLFIELD ROAD	0	6	0
HAMBLETON AVENUE	0	0	1
HAMBLETON TERRACE	7	50	62
HAMILTON DRIVE	0	2	0
HAMILTON DRIVE EAST	0	1	0
HAMPDEN STREET	31	27	26
HANSOM PLACE	11	9	6
HARCOURT STREET	16	13	5
HAWTHORN GROVE	8	6	4
HAWTHORN STREET	18	11	7
HAXBY ROAD	66	29	26
HAXBY ROAD/ HAMBLETON TERRACE LINK	0	1	2
HEBDEN RISE	0	2	0

	2004/05	2005/06	2006/07
HERBERT STREET	0	4	1
HESLINGTON LANE - FULFORD	3	9	3
HESLINGTON ROAD	3	19	5
HESLINGTON ROAD PARK	0	0	4
HETHERTON STREET	1	0	1
HEWORTH GREEN	12	19	15
HEWORTH HALL DRIVE	1	1	1
HEWORTH ROAD	24	22	5
HEWORTH VILLAGE	39	95	54
HIGH NEWBIGGIN STREET	1	0	0
HIGH OUSEGATE	27	35	29
HIGH PETERGATE	170	248	173
HIGH PETERGATE/PRECENTOR'S COURT	0	0	1
HIGHCLIFFE COURT	2	1	3
HOBGATE	0	1	0
HOLGATE BRIDGE GARDENS	0	4	0
HOLGATE PARK DRIVE	0	0	4
HOLGATE ROAD	27	26	11
HOPE STREET CUL DE SAC	3	16	3
HOPE STREET	41	37	17
HORNER STREET	8	0	0
HORSMAN AVENUE	14	13	8
HOSPITAL FIELDS ROAD	5	18	7
HOWARD STREET	16	6	17
HOWE HILL ROAD	0	1	0
HOWE STREET	3	2	2
HUBY COURT	4	0	0
HUDSON STREET	0	0	4
HULL ROAD	0	2	3
HUNGATE (OFF THE STONEBOW)	3	26	56
HUNGATE (OFF ST SAVIOURGATE)	53	40	42
HUNT COURT	1	0	3
HUNTERS WAY	0	1	0
HUNTINGTON ROAD	79	63	73
HYRST GROVE	3	3	0
INMAN TERRACE	3	11	7
INNOVATION CLOSE - HESLINGTON	4	2	2
INNOVATION WAY - WESTERN SPINE RD - HESLINGTON	1	0	0
INNOVATION WAY - HESLINGTON	22	65	35
INTAKE LANE - DUNNINGTON	1	0	0
JACKSON STREET	26	10	15
JAMES NICHOLSON LINK	0	1	0
JAMES STREET	3	12	7
JEWBURY	0	0	3
JOCKEY LANE - HUNTINGTON	1	5	1
JOHN STREET	1	0	0
JUBILEE TERRACE	1	0	7
JULIA AVENUE - HUNTINGTON	0	3	0

	2004/05	2005/06	2006/07
KATHRYN AVENUE - HUNTINGTON	2	32	9
KILBURN ROAD	0	1	2
KING STREET	178	252	196
KING'S SQUARE	21	37	28
KING'S STAITH	24	84	50
KINGS STAITH UPPER	7	41	81
KNAVESMIRE ROAD	0	1	0
KYME STREET	23	17	22
LABURNUM GARTH	1	0	0
LANG AVENUE	0	1	0
LANSDOWNE TERRACE	15	22	16
LAVENDER GROVE	0	1	5
LAWRENCE STREET	26	35	23
LAYERTHORPE	5	10	5
LEAD MILL LANE	237	142	157
LEAKE STREET	2	6	5
LEEMAN ROAD	1	3	1
LENDAL	212	206	119
LENDAL HILL	1	9	9
LIBRARY SQUARE	94	148	100
LINDLEY STREET	1	5	6
LITTLE STONEGATE	36	46	54
LIVINGSTONE STREET	1	0	0
LOCKWOOD STREET	24	14	22
LOCKWOOD STREET/WAVERLEY STREET LINK ROAD	1	1	0
LONG CLOSE LANE	21	14	15
LONGFIELD TERRACE	8	4	9
LORD MAYORS WALK	304	208	224
LOVELL STREET	4	1	1
LOW OUSEGATE	4	11	13
LOW PETERGATE	9	25	46
LOW POPPLETON LANE	1	9	7
LOWER DARNBOROUGH STREET	9	12	6
LOWER EBOR STREET	0	4	5
LOWER FRIARGATE	102	144	122
LOWER PRIORY STREET	45	39	57
LOWTHER COURT	1	0	0
LOWTHER STREET	105	102	75
LOWTHER TERRACE	38	46	20
LOWTHER TERRACE SERVICE ROAD	1	0	2
MAIN STREET - FULFORD	0	1	0
MAIN STREET - HESLINGTON	48	132	62
MALTON ROAD	10	4	0
MALTON ROAD (A1036 - CLEARWAY)	1	0	0
MALTON ROAD SERVICE RD	9	29	24
MANOR DRIVE	0	0	1
MANOR DRIVE SOUTH	0	11	1
MANSFIELD STREET	11	13	1
MARCH STREET	12	18	15

	2004/05	2005/06	2006/07
MARGARET STREET CUL DE SAC	2	0	1
MARGARET STREET	52	66	48
MARKET STREET	16	19	34
MARKHAM CRESCENT	24	15	21
MARKHAM STREET	66	32	45
MARLBOROUGH GROVE	14	16	18
MARYGATE LANE	7	1	1
MARYGATE	441	234	283
MAYFIELD GROVE	0	1	0
MELBOURNE STREET	67	41	24
MELROSEGATE	1	3	1
MERCHANTGATE	1	2	2
MICKLEGATE	357	366	267
MILL LANE	6	5	2
MILL STREET	1	4	3
MILLFIELD AVENUE	0	2	2
MILLFIELD LANE	0	1	1
MILLFIELD ROAD	9	13	22
MILNER STREET	4	16	3
MINSTER YARD	1	0	2
MOATSIDE COURT	12	28	13
MONKGATE BETWEEN 3-5 INC YARD	14	19	24
MONKGATE CLOISTERS	15	6	18
MONKGATE	183	112	131
MONKS CROSS DRIVE	24	0	0
MONKS CROSS LINK ROAD - CLEARWAY	10	1	0
MONKS CROSS ROUNDABOUT	3	0	0
MOSS STREET	58	71	82
MOUNT EPHRAIM	13	13	4
MOUNT VALE	1	0	0
MURRAY STREET	0	5	5
MURROUGH WILSON PLACE	2	8	10
MURTON LANE - CLEARWAY	34	52	36
MUSEUM STREET	7	3	5
NAVIGATION ROAD	19	31	45
NELSON STREET	11	26	34
NELSON'S LANE	0	2	0
NESSGATE	2	1	1
NEVILLE STREET	21	23	36
NEVILLE TERRACE	20	14	11
NEW STREET	15	20	17
NEW WALK TERRACE	27	13	19
NEWBOROUGH STREET	9	8	9
NEWBY TERRACE	1	3	0
NEWTON TERRACE	20	11	6
NICHOLAS GARDENS	2	1	2
NICHOLAS STREET	0	2	0
NORFOLK STREET	16	19	13
NORTH MOOR ROAD	1	0	0

	2004/05	2005/06	2006/07
NORTH PARADE	43	55	22
NORTH STREET ACCESS ROAD	0	11	17
NORTH STREET	597	690	583
NUNMILL STREET	17	27	19
NUNNERY LANE	30	15	2
NUNTHORPE AVENUE	5	5	6
NUNTHORPE GROVE	2	0	0
NUNTHORPE ROAD	118	62	55
OAK RISE	3	1	4
OAK TREE LANE - HAXBY	0	1	0
OGLEFORTH	10	2	0
OLD MOOR LANE	1	0	0
OXFORD STREET	5	0	0
PALMER LANE	53	56	65
PARAGON STREET	9	4	0
PARK CRESCENT	19	15	23
PARK GROVE	38	31	41
PARK LANE	2	4	6
PARK STREET	27	28	41
PARLIAMENT STREET	216	99	114
PASTON WALK	2	0	1
PAVEMENT	19	28	30
PEAR TREE COURT	1	0	3
PEASHOLME GREEN	19	15	21
PECKITT STREET	69	59	42
PENLEYS GROVE STREET	87	39	17
PERCY STREET	3	0	0
PERCY'S LANE	22	34	25
PETER LANE	1	8	11
PETERSWAY	1	5	7
PICCADILLY	614	585	416
PILGRIM STREET	12	2	2
POPLAR STREET	0	4	6
POPPLETON ROAD	2	10	9
PORTLAND STREET	101	68	54
POSTERN CLOSE	11	6	18
PRECENTOR'S COURT	18	10	10
PRICE STREET	1	0	1
PRICES LANE	5	4	3
PRIORY STREET	165	72	69
PROSPECT TERRACE	38	31	11
QUEEN ANNES ROAD	76	69	51
QUEEN STREET	0	3	6
QUEEN STREET SLIP ROAD	40	32	34
QUEEN VICTORIA STREET	1	6	2
QUEENS STAITH	397	389	285
QUEENS STAITH ROAD	21	40	27
RAILWAY TERRACE	5	0	0
RAILWAY VIEW	1	2	0

	2004/05	2005/06	2006/07
RAMSAY CLOSE	2	3	1
REDENESS STREET	4	6	4
REGENT STREET	10	12	5
RICHARDSON STREET	17	14	6
RICHMOND STREET CUL DE SAC	4	1	0
RICHMOND STREET	6	0	2
RIVER STREET	14	7	5
ROSE STREET	0	7	74
ROSEMARY COURT	25	12	19
ROSEMARY PLACE	16	8	8
ROSSLYN STREET	1	0	5
ROUGIER STREET	14	1	2
ROYAL CHASE	0	0	1
RUSSELL STREET	26	63	39
SALISBURY TERRACE	7	5	3
SANDACRE COURT	0	0	1
SANDRINGHAM STREET	22	25	20
SCAIFE GARDENS	0	3	2
SCAIFE STREET	2	10	13
SCARBOROUGH TERRACE	0	4	6
SCARCROFT HILL	2	25	27
SCARCROFT LANE	1	4	1
SCARCROFT ROAD	149	108	102
SCHOOL LANE - HESLINGTON	2	11	0
SCHOOL STREET	9	22	7
SCOTT STREET	123	62	32
SECOND AVENUE	4	0	0
SELDON ROAD	0	9	10
SELDON STREET	0	0	7
SEVERUS AVENUE	1	1	3
SEVERUS STREET	16	14	4
SHAW'S TERRACE	4	4	11
SILVER STREET	1	0	0
SIM BALK LANE - BISHOPTHORPE	0	1	0
SKELDERGATE	34	35	16
SLINGSBY GROVE	2	2	7
SMALES STREET	22	38	19
SOUTH ESPLANADE	27	39	30
SOUTHLANDS ROAD	86	92	116
SPECULATION STREET	4	20	29
SPEN LANE	3	3	2
SPENCER STREET	8	7	6
SPRINGFIELD AVENUE	3	4	2
SPRINGFIELD COURT	2	0	0
SPRINGFIELD ROAD	1	0	0
SPURRIERGATE	14	31	20
ST ANDREW PLACE	3	1	6
ST ANDREWGATE	44	33	38
ST ANN'S COURT	2	0	0

	2004/05	2005/06	2006/07
ST BENEDICT ROAD	75	167	58
ST CLEMENT'S GROVE	0	0	2
ST DENY'S ROAD	37	60	35
ST HELEN'S ROAD	0	1	0
ST HELEN'S SQUARE	14	14	33
ST JAMES MOUNT	0	0	3
ST JOHN STREET	62	84	72
ST JOHN STREET - BACK LANE	2	0	0
ST JOHNS CRESCENT	9	15	10
ST LEONARD'S BACK LANE	1	3	0
ST LEONARD'S PLACE	5	2	1
ST MARGARETS TERRACE	6	4	4
ST MARYS	70	46	67
ST MARYS LANE	1	2	6
ST MAURICE'S ROAD	3	0	0
ST OLAVE'S ROAD	66	41	73
ST PAUL'S SQUARE	7	2	4
ST PAUL'S TERRACE	14	4	1
ST PETER'S GROVE	12	5	12
ST SAMPSON'S SQUARE	124	174	191
ST SAVIOURGATE	180	227	317
ST SAVIOUR'S PLACE	25	45	28
ST STEPHEN'S ROAD	0	1	1
ST THOMAS PLACE	33	31	21
STAMFORD BRIDGE ROAD CLEARWAY - DUNNINGTON	89	42	24
STANLEY STREET	19	25	32
STATION RISE	3	0	1
STATION ROAD	1	2	1
STATION ROAD - HAXBY	0	2	0
STOCKTON LANE	0	2	0
SURTEES STREET	3	4	2
SWANN STREET	25	37	23
SWINEGATE	46	78	108
SYCAMORE PLACE	9	12	10
SYCAMORE TERRACE	18	15	16
TADCASTER ROAD	12	25	5
TANNER ROW MULTI STOREY CAR PARK SERVICE RD	7	8	2
TANNER ROW	31	28	19
TANNER'S MOAT	104	118	108
TEA ROOM SQUARE EX LAY BYS	0	0	2
TECK STREET	8	4	1
TELFORD TERRACE	1	1	9
TERRY AVENUE	6	22	3
THE AVENUE	29	18	12
THE CRESCENT	56	68	41
THE GREEN ACOMB	2	12	6
THE LEYES	0	0	2
THE MOUNT	62	43	24

	2004/05	2005/06	2006/07
THE ROPEWALK	1	0	0
THE STONEBOW	28	56	74
THE VILLAGE - HAXBY	0	6	1
THIEF LANE	0	0	1
THORPE STREET	20	27	55
TOFT GREEN	387	298	236
TOWER ST ACCESS RD ST GEORGES FIELD CAR PARK	0	6	1
TOWER STREET	308	286	183
TOWNEND STREET	47	31	27
TRAFALGAR STREET	0	0	4
TRIBUNE WAY	1	12	0
TRINITY LANE	5	6	12
TUDOR ROAD	0	1	10
ULLSWATER	1	0	0
UNION TERRACE/CLARENCE STREET LINK ROAD	16	6	1
UNION TERRACE COACH PARK SERVICE RD	1	0	0
UNION TERRACE	61	48	39
UNIVERSITY ROAD - HESLINGTON	85	66	26
UPPER PRICE STREET	21	19	9
VICTOR STREET	10	20	23
VICTORIA STREET	1	1	0
VINE STREET	87	66	25
VYNER STREET	67	51	57
WAIN'S ROAD	0	1	1
WALMGATE	147	338	330
WALNUT CLOSE - HESLINGTON	10	2	3
WALPOLE STREET	41	38	48
WARD COURT	0	0	2
WARWICK STREET	33	11	11
WATER END	0	5	1
WATSON STREET	6	7	12
WATSON TERRACE	2	9	9
WAVERLEY STREET	11	17	21
WELLINGTON ROW	7	12	8
WELLINGTON STREET	20	18	10
WENLOCK TERRACE	10	37	9
WENTWORTH ROAD	0	16	27
WESLEY PLACE	7	3	6
WEST END - STRENSALL	1	0	0
WEST ESPLANADE	13	6	7
WESTMINSTER ROAD	35	37	17
WESTWOOD TERRACE	0	0	1
WHENBY GROVE - HUNTINGTON	1	1	0
WHIP-MA-WHOP-MA-GATE	48	43	30
WHITBY AVENUE	0	2	0
WHITE CROSS ROAD	31	33	27
WIGGINTON ROAD	56	49	46
WIGGINTON TERRACE	0	16	8
WILKINSON WAY	0	1	0

	2004/05	2005/06	2006/07
WILLIAM PLOWS AVENUE	0	2	0
WILLIS STREET	16	16	11
WILTON RISE	0	1	1
WINDMILL LANE	0	6	0
WINDMILL RISE	1	1	0
WINTERSCALE COURT	1	0	0
WINTERSCALE STREET	9	7	17
WINTERSCALE STREET SERVICE ROAD	5	1	3
WOLSLEY STREET	9	3	2
WOODLEA BANK	0	1	0
YORK ROAD - SERVICE ROAD	3	55	56
YORK ROAD - ACOMB	7	37	30
YORK ROAD - HAXBY	0	1	0

PCN's Issued for On-Street Parking Contraventions 2006-07

	Total
01 Parked in a restricted street during prescribed hours	6,155
02 Parked where waiting and loading/unloading restrictions are in force.	509
05 Parked after the expiry of paid for time	824
06 Parked without clearly displaying a valid pay and display ticket	1,295
07 Parked with payment made to extend the stay beyond the initial time	1
15 Parked in a residents' parking space without clearly displaying a permit	4,523
16 Parked in a permit space without displaying a valid permit	33
19 Parked in a parking place without clearly displaying a permit or p&d ticket	99
21 Parked in a suspended bay/space or part of bay/space	741
22 Reparked in the same parking place within one hour of leaving	0
23 Parked in a parking place or area not designated for that class of vehicle	48
24 Not parked correctly within the markings of the bay or space	12
25 Parked in loading place during restricted hours without loading	1
30 Parked for longer than permitted	261
40 Parked in a disabled parking place without a valid disabled badge	176
42 Parked in a parking place designated for police vehicles	42
45 Parked on a taxi rank	173
46 Stopped where prohibited on a clearway	60
47 Stopped on a restricted bus stop/stand	38
48 Parked in a restricted area outside a school	12
61 Commercial Vehicle parked on Footway	1
TOTALS	15,004

Penalty Charge Notice (PCN) Cancellation Reasons 2006-07 (As At April 2007)

	Total	% of Cancelled	% of PCN's Issued
Total Cancellations 2006-07	5191	100.00	22.17
Cancelled - Pay and Display Ticket - a PCN was issued because there was no ticket displayed in the vehicle. Valid ticket subsequently produced by the motorist. PCN cancelled with a warning to display ticket clearly.	1010	19.46	4.31
Cancelled - Resident Parking Permit - a PCN was issued because no valid permit was displayed in the vehicle whilst it was parked in a resident's permit only parking bay. Valid permit subsequently produced by the motorist. PCN cancelled with a warning to display permit clearly.	848	16.34	3.62
Cancelled - DVLA - Unable to establish ownership of vehicle due to DVLA records being out of date or motorist providing evidence that they were not the owner of the vehicle at the time that the PCN was issued.	832	16.03	3.55
Cancelled - Disabled Badge Holder - a PCN was issued because no valid disabled badge was displayed in the vehicle whilst it was parked in a place where only disabled badge holders may park. Valid disabled badge was subsequently produced by motorist. PCN cancelled with a warning to display badge clearly.	739	14.24	3.16
Cancelled - Other Reasons - e.g. Mitigating circumstances - the motorist agrees that the PCN was correctly issued but provides sufficient mitigating circumstances for cancellation to be considered.	467	9.00	1.99
Cancelled - Training and Spoiled Penalty Charges including Drive Aways - a PCN was never actually issued because it was used for training purposes OR because the motorist drove off before a penalty charge could be issued.	431	8.30	1.84
Cancelled - Attendant Error - for example wrong vehicle registration or location entered on PCN.	199	3.83	0.85

Cancelled - Foreign Vehicle or Driver - Driver is foreign and has not paid the PCN. Cannot be legally pursued in their own country for a PCN that is issued in UK.	160	3.08	0.68
Cancelled - Clerical Errors - errors and/or delays made when dealing with correspondence.	110	2.12	0.47
Cancelled - Car Park Permit Holders - a PCN was issued because no valid permit was displayed in the vehicle whilst it was parked in a council car park. Valid permit subsequently produced by motorist. PCN Cancelled with a warning to display permit clearly.	103	1.98	0.44
Cancelled - Loading/Unloading - the motorist has provided evidence that, at the time the PCN was issued, an exemption for loading or unloading applied and the motorist was loading or unloading.	102	1.96	0.44
Cancelled - Out of Bay - the vehicle was parked out of a marked bay but the driver had sufficient reason not to be able to park in a bay and was not causing an obstruction to other motorists.	41	0.79	0.18
Cancelled - Vehicle Broken Down - the motorist has provided evidence that, at the time the PCN was issued, the vehicle had a mechanical problem that prevented it from being moved and the vehicle was subsequently moved within a reasonable amount of time.	40	0.77	0.17
Cancelled - Illness of Driver or Passengers - the motorist has provided medical evidence that the driver or passenger was unable to return to their vehicle within the time period stipulated.	40	0.77	0.17
Cancelled - Signs and Lines - The signs and/or lines where the PCN was issued were not sufficient for a reasonable motorist to know that they were not allowed to park there, for example the lines may not be sufficiently clear or the sign obscured or incorrect.	31	0.60	0.13
Cancelled - Vehicle Stolen & Other Crime - the motorist has provided evidence (e.g. Police incident number) that at the time the PCN was issued the vehicle had been stolen or the driver/passengers had been subject to some other crime.	30	0.58	0.13

Cancelled - Pay & Display Machine Faults - there is sufficient reasonable doubt to conclude that at the time the PCN was issued the pay and display machine may not have been working correctly.	7	0.13	0.03
Cancelled - Appeal Allowed by Parking Adjudicator - the council turned down the representations of the motorist that the PCN was wrongly issued and the motorist subsequently appealed to the national independent adjudicator and was successful in their appeal.	1	0.02	0.00
Total of all PCN's Issued 2006-07	23418		

APPENDIX F

PCN's Issued, Cancelled, Written off & Paid in 2006 - 07 (As At April 2007)

	Issued	Cancelled	% of Issued	Written Off	Paid	% of Issued	Paid at Discount Rate	% of Paid	% of Issued	Still Being Pursued	% of Issued
Apr-06	2343	597	25.48	24	1604	68.46	1291	80.49	55.10	118	5.04
May-06	2145	566	26.39	14	1451	67.65	1206	83.12	56.22	114	5.31
Jun-06	1900	485	25.53	10	1295	68.16	1034	79.85	54.42	110	5.79
Jul-06	1982	480	24.22	3	1373	69.27	1110	80.84	56.00	126	6.36
Aug-06	2186	575	26.30	10	1490	68.16	1238	83.09	56.63	111	5.08
Sep-06	1850	398	21.51	5	1318	71.24	1107	83.99	59.84	129	6.97
Oct-06	2061	437	21.20	0	1445	70.11	1229	85.05	59.63	179	8.69
Nov-06	2368	508	21.45	0	1633	68.96	1388	85.00	58.61	227	9.59
Dec-06	1797	366	20.37	0	1231	68.50	909	73.84	50.58	200	11.13
Jan-07	1533	269	17.55	0	1073	69.99	908	84.62	59.23	191	12.46
Feb-07	1316	181	13.75	0	942	71.58	795	84.39	60.41	193	14.67
Mar-07	1937	329	16.99	0	1176	60.71	1068	90.82	55.14	432	22.30
Total	23418	5191	22.17	66	16031	68.46	13283	82.86	56.72	2130	9.10

Note - Written Off means that the PCN has been passed to a Bailiff company but they have been unable to obtain any money from the owner of the vehicle, either because they cannot trace the owner or because the owner has insufficient funds to pay the PCN.